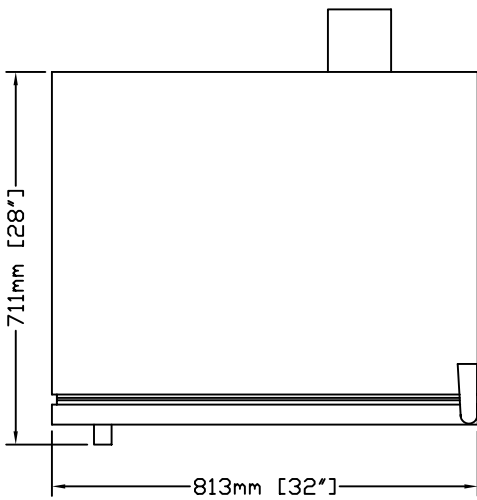
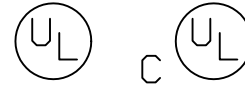
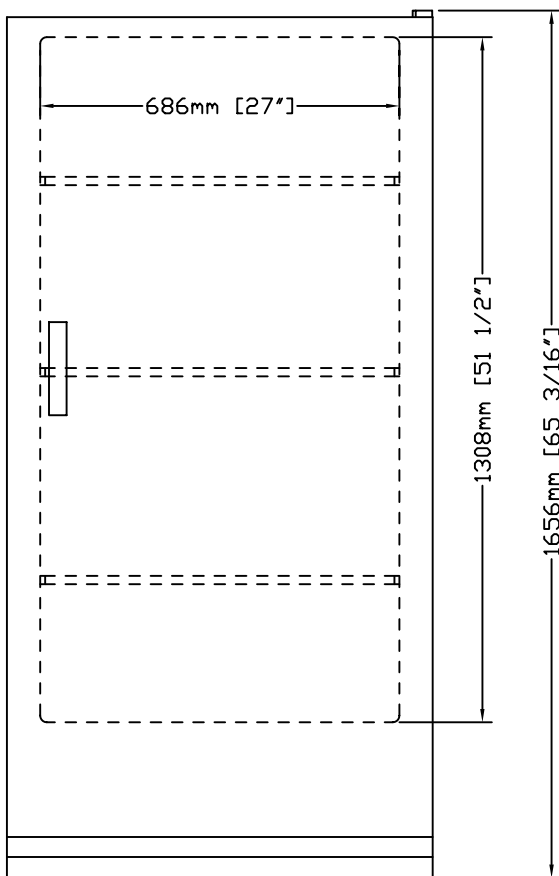


MODEL EXF1618A

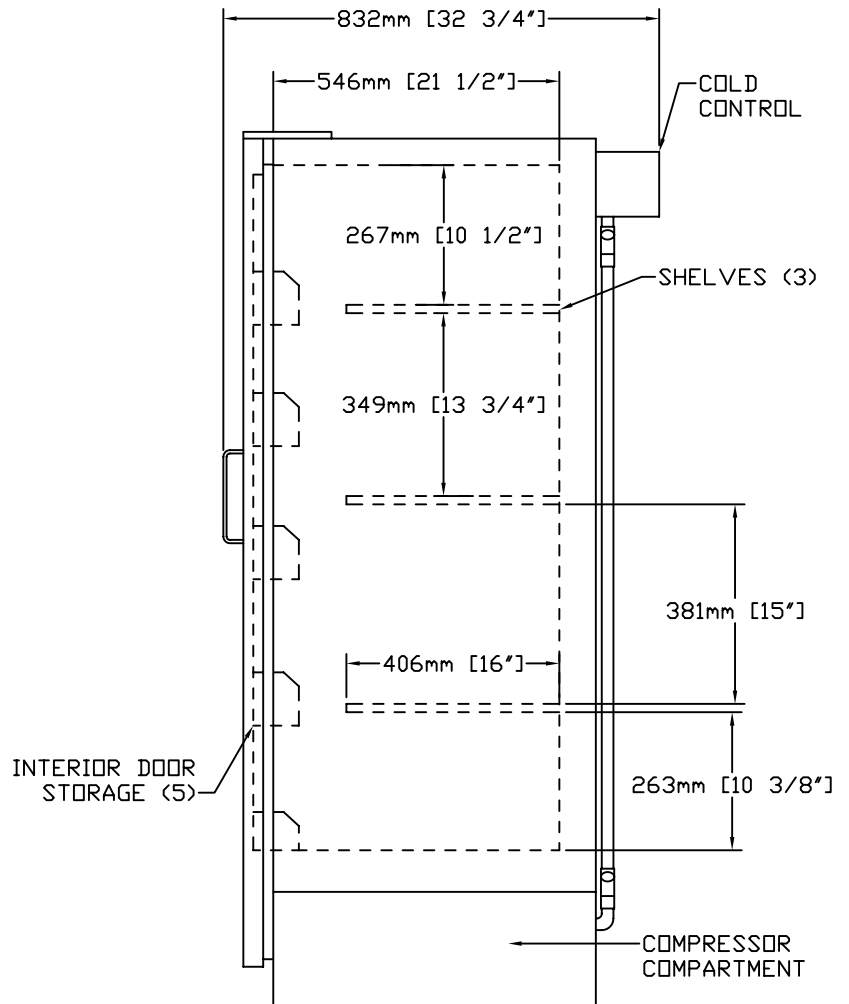
EXPLOSION PROOF FREEZER



TOP VIEW



FRONT VIEW



SIDE VIEW

3/2005

REVCO

REVCO
 275 Aiken Road
 Asheville, NC 28804
 TEL. 1-800-252-7100
 TEL. 828-658-2711 FAX 828-658-0363

MODEL EXF1618A

GENERAL SPECIFICATIONS

EXTERIOR - WHITE TEXTURED VINYL ON STEEL

WIDTH 813mm (32") DEPTH 832mm (32.8") HEIGHT 1656mm (65.2")

INTERIOR - WHITE TEXTURED VINYL ON STEEL

WIDTH 686mm (27") DEPTH 546mm (21.5") HEIGHT 1308mm (51.5")

INSULATION - FOAMED-IN-PLACE POLYURETHANE

GASKET - MAGNETIC

DOOR - SOLID WITH KEY LOCK

SHELVES - (3) ALUMINUM, STATIONARY

(5) BUILT-IN DOOR SHELVES

FEET - (4) LEVELING, FRONT ONLY

CONTROL - (1) THERMOSTATIC, MAY BE SET FOR DESIRED TEMPERATURE

-12°C TO -20°C (10°F TO -4°F), FACTORY SET TO -20°C (-4°F)

DEFROST - MANUAL

COMPRESSOR - 1/4 H.P., R134a REFRIGERANT, NOMINAL BTU'S TO ROOM

AMBIENT - 121 WATTS (412 BTU'S/HR)

DECIBEL RATING - 45 dBA

UL/CUL LISTED TO CLASS I, GROUPS C AND D

CAPACITY - 490 L (17.3 CU. FT.)

ELECTRICAL DATA - 120/60/1 1.8 AMPS, MUST BE HARDWIRED BY CUSTOMER

SHIPPING WEIGHT - 107 KG (235 LBS)

SHIPPING VOLUME - 1.7 CU. METERS (61 CU. FEET)