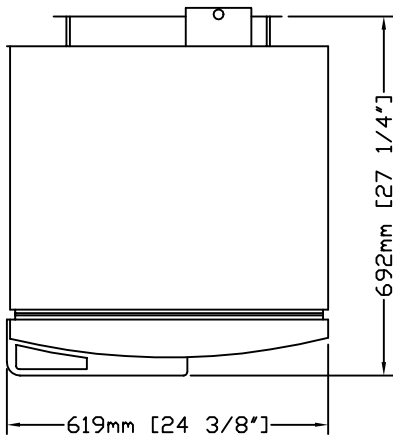
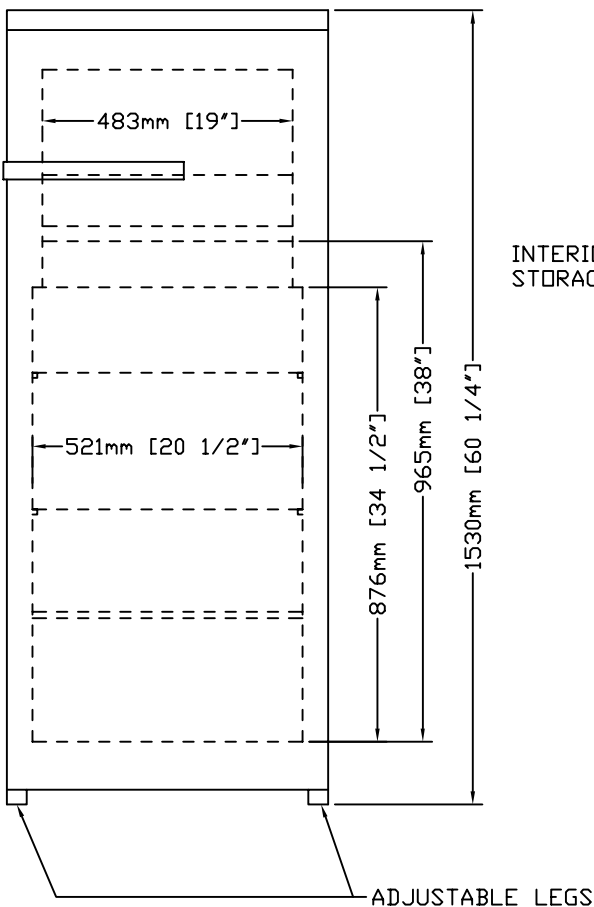


MODEL FMSC141A

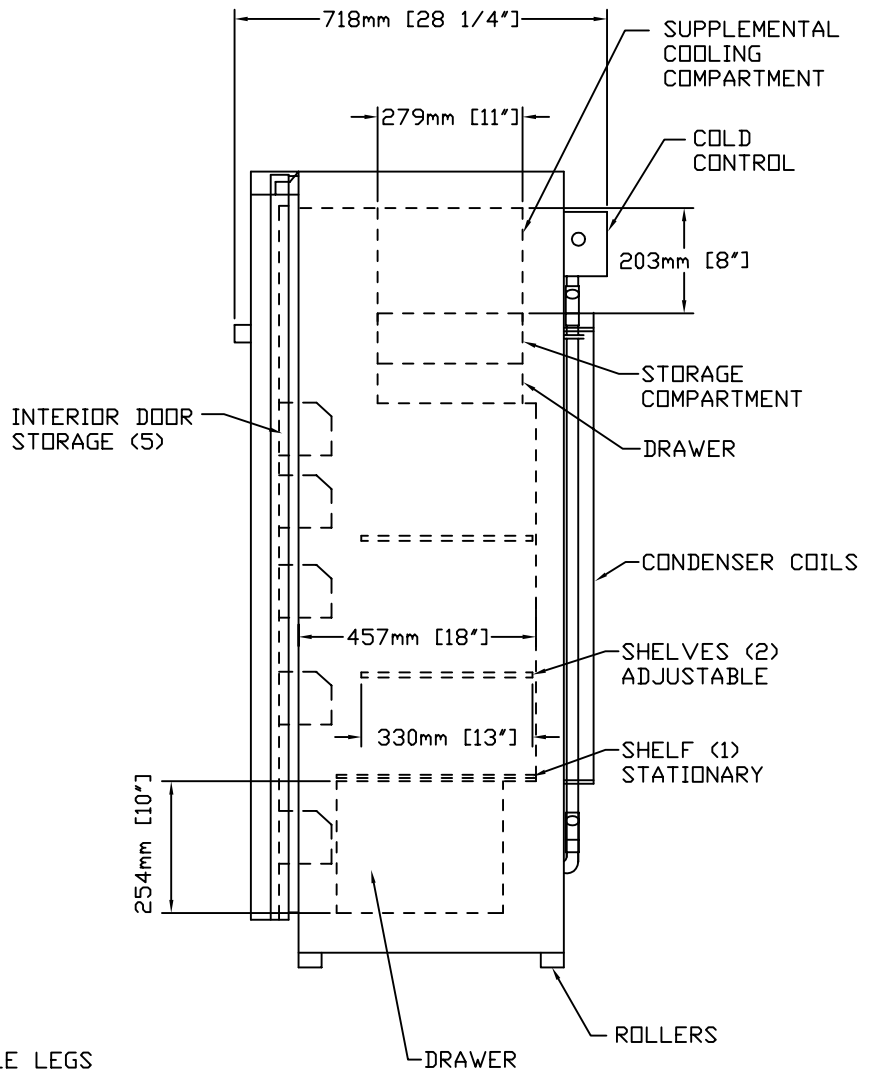
FLAMMABLE STORAGE
REFRIGERATOR/FREEZER



TOP VIEW



FRONT VIEW



SIDE VIEW

12/2004

REVCO

REVCO
275 Aiken Road
Asheville, NC 28804
TEL. 1-800-252-7100
TEL. 828-658-2711 FAX 828-658-0363

MODEL FMSC141A

GENERAL SPECIFICATIONS

EXTERIOR - WHITE TEXTURED VINYL ON STEEL

WIDTH 619mm (24.4") DEPTH 719mm (28.3") HEIGHT 1530mm (60.3")

INTERIOR - SEAMLESS LINER OF VACUUM-FORMED ABS PLASTIC

COOLER WIDTH 521mm (20.5") DEPTH 457mm (18") HEIGHT 965mm (38")

SUPPLEMENTAL COOLER WIDTH 483mm (19") DEPTH 279mm (11")

HEIGHT 203mm (8")

INSULATION - FOAMED-IN-PLACE POLYURETHANE

GASKET - MAGNETIC

DOOR - SOLID, NO LOCK (LOCK OPTION NOT AVAILABLE)

SHELVES - (2) EPOXY, ADJUSTABLE IN 38mm (1.5") INCREMENTS

(1) ABS PLASTIC, STATIONARY

(5) REMOVABLE DOOR SHELVES

DRAWERS - (2) ABS PLASTIC

FEET - (2) LEVELING, FRONT ONLY

(2) ROLLERS, BACK ONLY

CONTROL - (1) THERMOSTATIC, MAY BE SET FOR DESIRED TEMPERATURE

REFRIGERATOR 0°C TO 6°C (32°F TO 43°F), FACTORY SET TO +4°C (39°F)

SUPPLEMENTAL COOLING COMPARTMENT 2°C TO -12°C (36°F TO 10°F)

FACTORY SET TO -9°C (16°F)

DEFROST - MANUAL

REFRIGERANT - R134a

NOMINAL BTU'S TO ROOM AMBIENT - 39 WATTS (133 BTU'S/HR)

CAPACITY - 31 L (1.1 CU. FT.) FREEZER, 272 L (9.6 CU. FT.) REFRIGERATOR

ELECTRICAL DATA - 120/60/1 6.5 AMPS

SHIPPING WEIGHT - 54 KG (119 LBS)

SHIPPING VOLUME - 0.7 CU. METERS (26 CU. FEET)