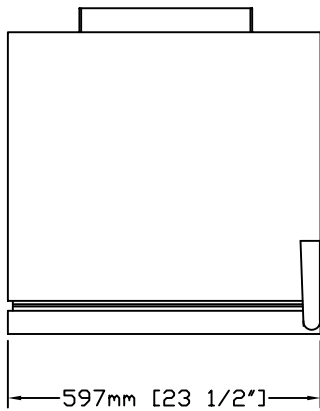
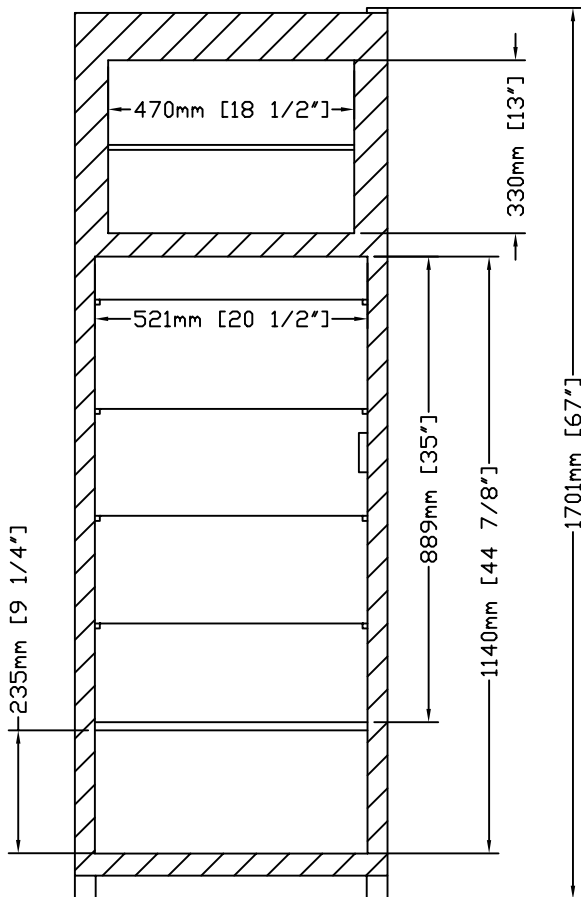


MODEL RCRF112A

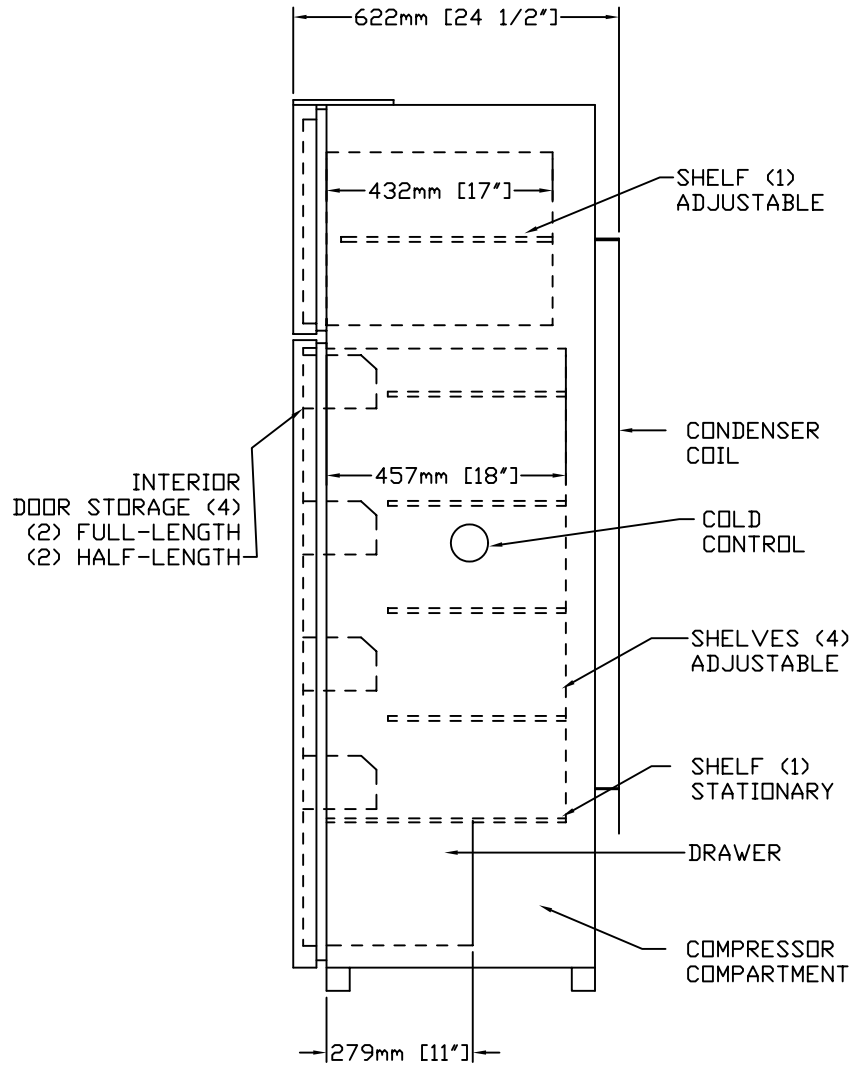
LABORATORY REFRIGERATOR/FREEZER



TOP VIEW



FRONT VIEW-SECTION



SIDE VIEW

11/2004

REVCO

REVCO
 275 Aiken Road
 Asheville, NC 28804
 TEL. 1-800-252-7100
 TEL. 828-658-2711 FAX 828-658-0363

MODEL RCRF112A

GENERAL SPECIFICATIONS

EXTERIOR - WHITE TEXTURED VINYL ON STEEL

WIDTH 597mm (23.5") DEPTH 622mm (24.5") HEIGHT 1701mm (67")

INTERIOR - SEAMLESS LINER OF VACUUM-FORMED ABS PLASTIC

FREEZER WIDTH 470mm (18.5") DEPTH 432mm (17") HEIGHT 330mm (13")

COOLER WIDTH 521mm (20.5") DEPTH 457mm (18") HEIGHT 1140mm (44 7/8")

INSULATION - FOAMED-IN-PLACE POLYURETHANE

GASKET - MAGNETIC

DOORS - (2) SOLID, NO LOCKS

SHELVES - (4) EPOXY, ADJUSTABLE IN 58mm (2.3") INCREMENTS

(1) GLASS, STATIONARY

(1) EPOXY, ADJUSTABLE IN FREEZER

(4) REMOVABLE DOOR SHELVES, (2) FULL-LENGTH, (2) HALF-LENGTH

DRAWERS - (1) ABS PLASTIC

FEET - (2) LEVELING, FRONT ONLY

(2) ROLLERS, BACK ONLY

CONTROL - (1) THERMOSTATIC, MAY BE SET FOR DESIRED TEMPERATURE

REFRIGERATOR +2°C TO +10°C (36°F TO 50°F), FACTORY SET TO +4°C (39°F)

FREEZER -10°C TO -20°C (14°F TO -4°F), FACTORY SET TO -20°C (-4°F)

DEFROST - MANUAL

COMPRESSOR - 1/5 H.P., R134a REFRIGERANT, NOMINAL BTU'S TO ROOM

AMBIENT - 201 WATTS (685 BTU'S/HR)

CAPACITY - 68 L (2.4 CU. FT.) FREEZER, 249 L (8.8 CU. FT.) REFRIGERATOR

ELECTRICAL DATA - 120/60/1 1.5 AMPS

SHIPPING WEIGHT - 69 KG (151 LBS)

SHIPPING VOLUME - .85 CU. METERS (30 CU. FEET)