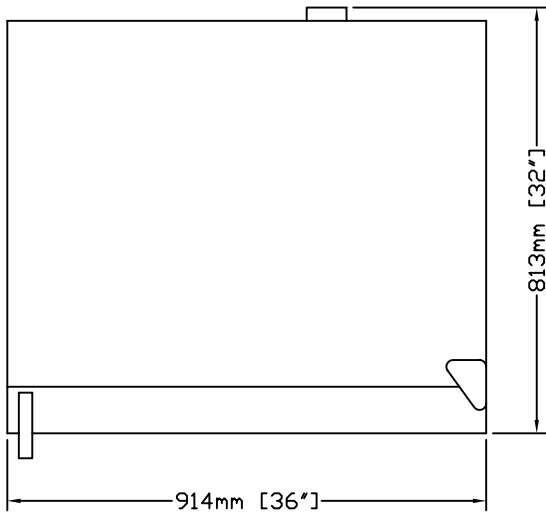
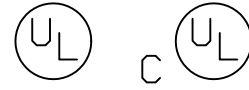
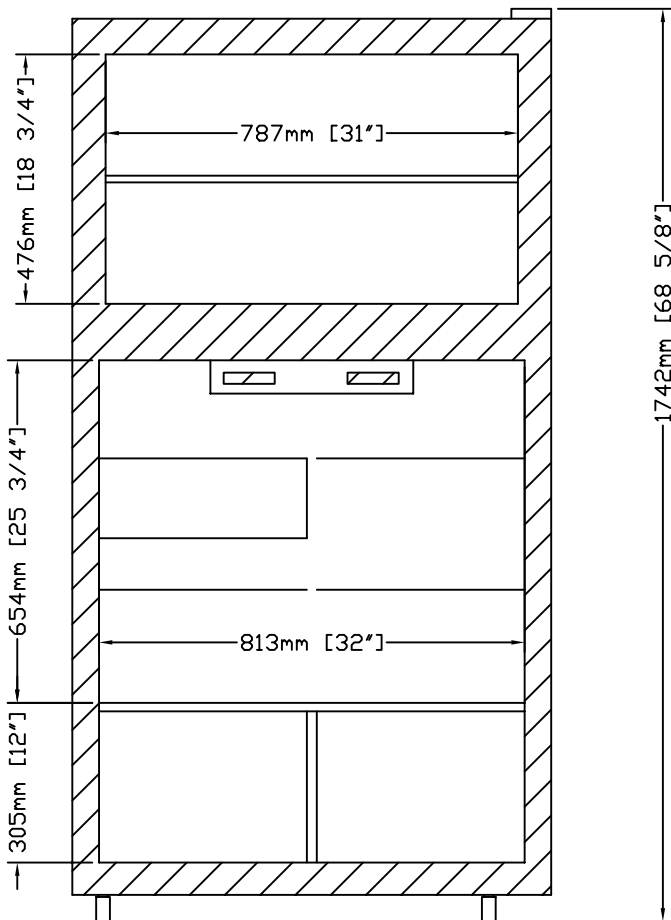


MODEL RCRF252A14

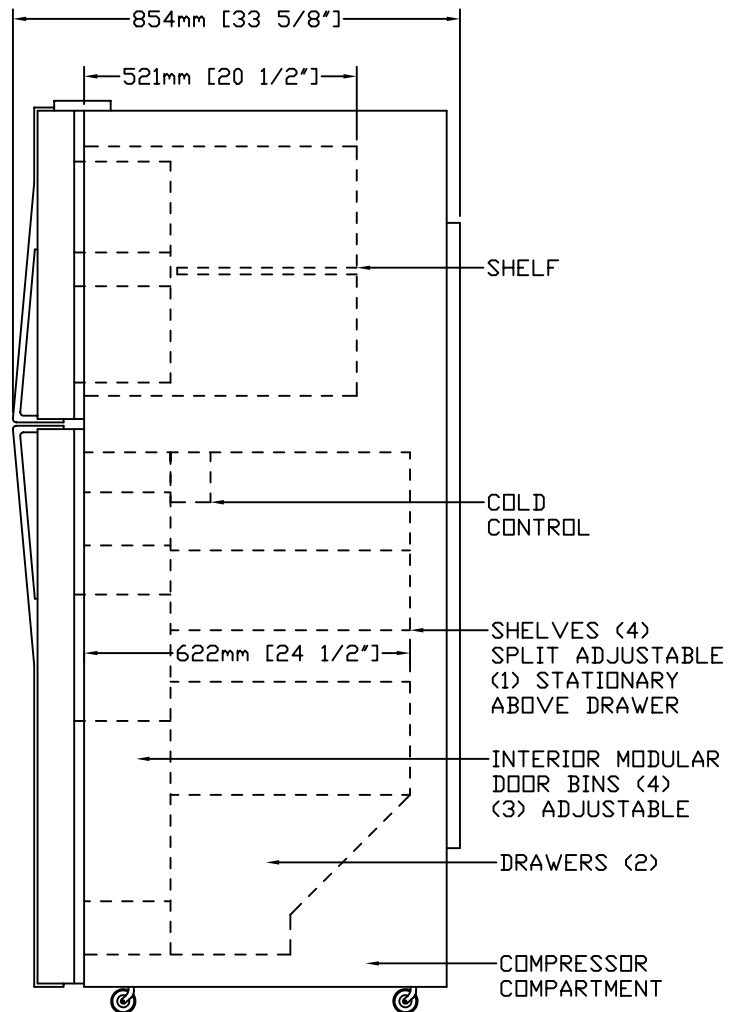
LABORATORY REFRIGERATOR/FREEZER



TOP VIEW



FRONT VIEW-SECTION



SIDE VIEW

7/2005

REVCO

REVCO
275 Aiken Road
Asheville, NC 28804
TEL. 1-800-252-7100
TEL. 828-658-2711 FAX 828-658-0363

MODEL RCRF252A14

GENERAL SPECIFICATIONS

EXTERIOR - WHITE TEXTURED VINYL ON STEEL

WIDTH 914mm (36") DEPTH 854mm (33.6") HEIGHT 1742mm (68.6")

INTERIOR - SEAMLESS LINER OF VACUUM-FORMED ABS PLASTIC

FREEZER WIDTH 787mm (31") DEPTH 521mm (20.5") HEIGHT 476mm (18.75")

COOLER WIDTH 813mm (32") DEPTH 622mm (24.5") HEIGHT 960mm (37.8")

INSULATION - FOAMED-IN-PLACE POLYURETHANE

GASKET - MAGNETIC

DOORS - (2) SOLID, NO LOCKS

SHELVES - (4) GLASS, SPLIT, ADJUSTABLE, REFRIGERATOR

(1) GLASS, STATIONARY ABOVE DRAWER

(1) EPOXY, ADJUSTABLE IN 2 POSITIONS, FREEZER

(4) DOOR SHELVES, (3) ADJUSTABLE, REFRIGERATOR

(2) DOOR SHELVES, FREEZER

DRAWERS - (2) ABS PLASTIC

FEET - (4) CASTERS, LOCKING

CONTROL - (1) THERMOSTATIC, MAY BE SET FOR DESIRED TEMPERATURE

REFRIGERATOR +1°C TO +7°C (34°F TO 44°F), FACTORY SET TO +3°C (37°F)

FREEZER -14°C TO -21°C (6°F TO -6°F), FACTORY SET TO -18°C (0°F)

DEFROST - AUTOMATIC

COMPRESSOR - 1/3 H.P., R134a REFRIGERANT, NOMINAL BTU'S TO ROOM

AMBIENT - 177 WATTS (605 BTU'S/HR)

DECIBEL RATING - 45 dBA

CAPACITY - 201 L (7.1 CU. FT.) FREEZER, 496 L (17.5 CU. FT.) REFRIGERATOR

ELECTRICAL DATA - 120/60/1 5.7 AMPS

SHIPPING WEIGHT - 64 KG (142 LBS)

SHIPPING VOLUME - 2.3 CU. METERS (82.6 CU. FEET)