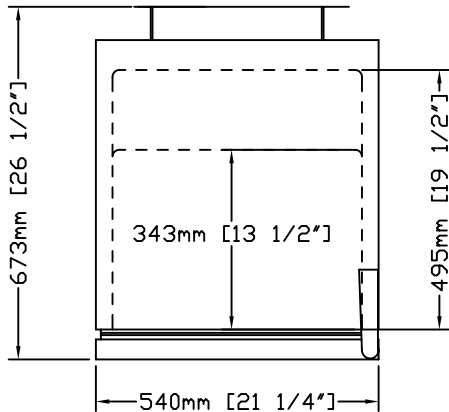
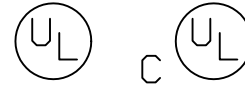
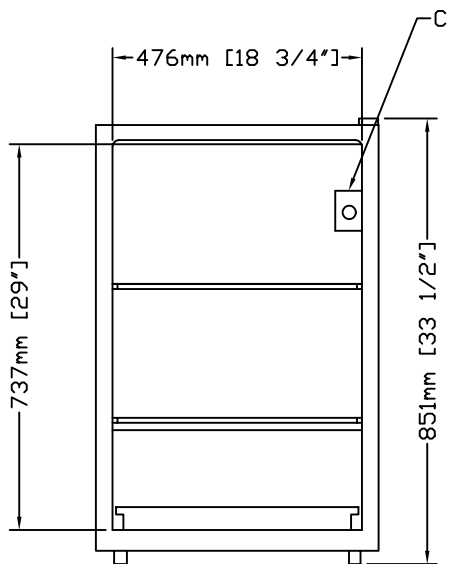


MODEL REF417A

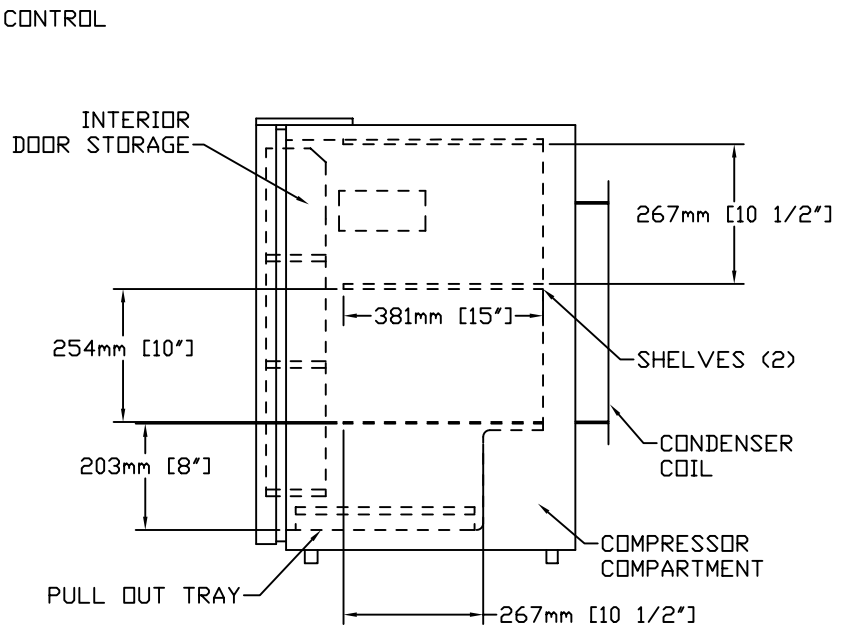
LABORATORY FREEZER



TOP VIEW



FRONT VIEW-SECTION



SIDE VIEW

11/2003

REVCO

REVCO
 275 Aiken Road
 Asheville, NC 28804
 TEL. 1-800-252-7100
 TEL. 828-658-2711 FAX 828-658-0363

MODEL REF 417A

GENERAL SPECIFICATIONS

EXTERIOR - WHITE TEXTURED VINYL ON STEEL

WIDTH 540mm (21.3") DEPTH 673mm (26.5") HEIGHT 851mm (33.5")

INTERIOR - SEAMLESS LINER OF VACUUM-FORMED ABS PLASTIC

WIDTH 476mm (18.8") DEPTH 495mm (19.5") HEIGHT 737mm (29")

INSULATION - FOAMED-IN-PLACE POLYURETHANE

GASKET - MAGNETIC

DOOR - SOLID, NO LOCK

SHELVES - (2) ALUMINUM, STATIONARY

(3) BUILT-IN DOOR SHELVES

FEET - (4) LEVELING, FRONT AND REAR

CONTROL - (1) THERMOSTATIC, MAY BE SET FOR DESIRED TEMPERATURE

-12°C TO -20°C (10°F TO -4°F), FACTORY SET TO -20°C (-4°F)

DEFROST - MANUAL

COMPRESSOR - 1/8 H.P., R134a REFRIGERANT

DECIBEL RATING - 28 dBA

CAPACITY - 141 L (5 CU. FT.)

ELECTRICAL DATA - 120/60/1 1.4 AMPS

SHIPPING WEIGHT - 38 KG (84 LBS)

SHIPPING VOLUME - .7 CU. METERS (24 CU. FEET)