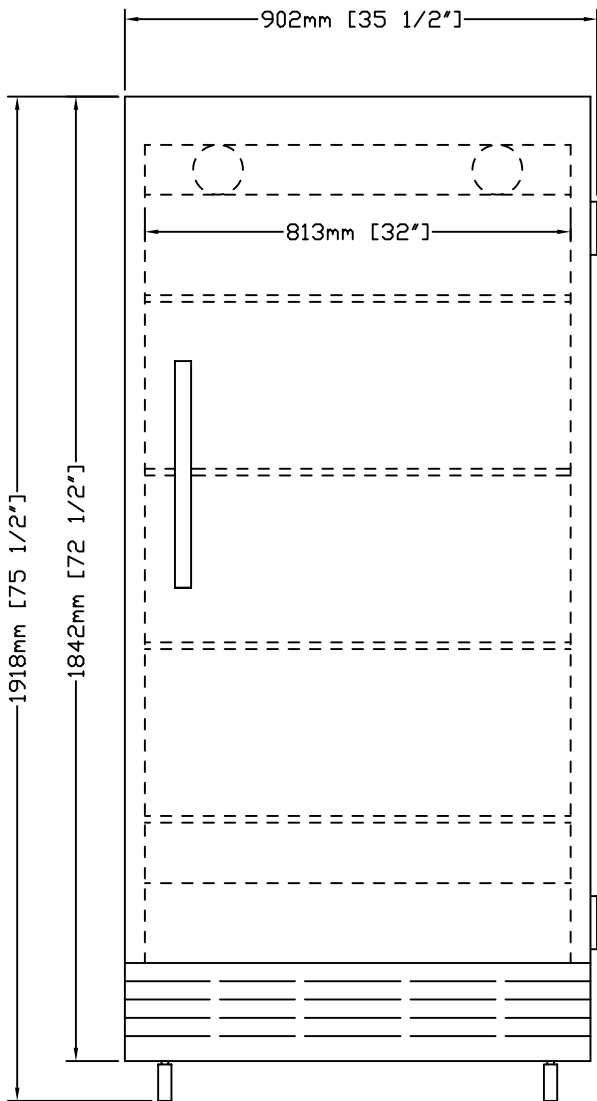
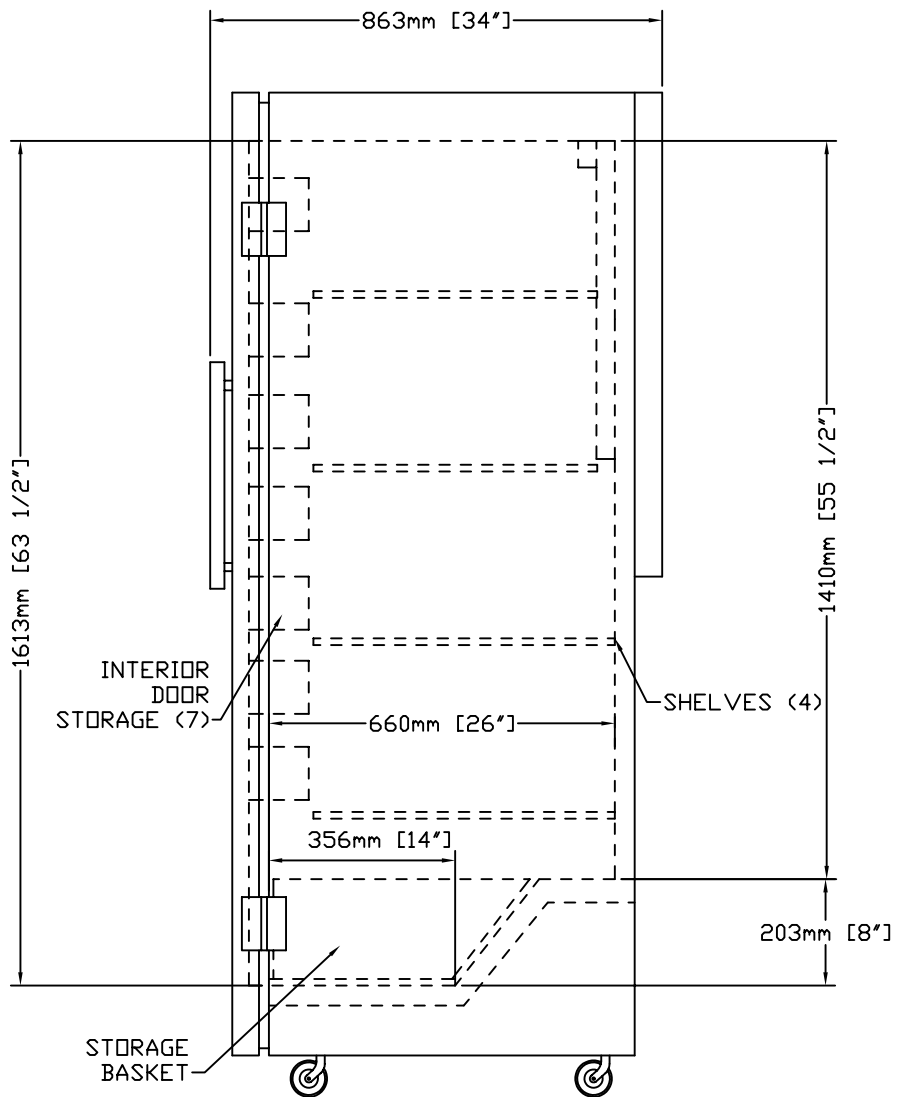


# MODEL RLF2918A

## LABORATORY FREEZER



FRONT VIEW



SIDE VIEW

11/2003

# REVCO

REVCO  
275 Aiken Road  
Asheville, NC 28804  
TEL. 1-800-252-7100  
TEL. 828-658-2711 FAX 828-658-0363

# MODEL RLF2918A

## GENERAL SPECIFICATIONS

EXTERIOR - WHITE TEXTURED VINYL ON STEEL

WIDTH 902mm (35.5") DEPTH 863mm (34") HEIGHT 1918mm (75.5")

INTERIOR - WHITE TEXTURED VINYL ON STEEL

WIDTH 813mm (32") DEPTH 660mm (26") HEIGHT 1613mm (63.5")

INSULATION - FOAMED-IN-PLACE POLYURETHANE

GASKET - MAGNETIC

DOOR - SOLID, KEY LOCK

SHELVES - (4) EPOXY, ADJUSTABLE IN 13mm (0.5") INCREMENTS

(7) BUILT-IN DOOR SHELVES

FEET - (4) CASTERS, LOCKING

CONTROL - (1) THERMOSTATIC, MAY BE SET FOR DESIRED TEMPERATURE

-12°C TO -20°C (10°F TO -4°F), FACTORY SET TO -20°C (-4°F)

DEFROST - AUTOMATIC

COMPRESSOR - 1/2 H.P., R134a REFRIGERANT, NOMINAL BTU'S TO ROOM

AMBIENT - 580 WATTS (1978 BTU'S/HR)

DECIBEL RATING - 45 dBA

CAPACITY - 861 L (30.4 CU. FT.)

ELECTRICAL DATA - 120/60/1 9.0 AMPS

SHIPPING WEIGHT - 159 KG (350 LBS)

SHIPPING VOLUME - 2.4 CU. METERS (84 CU. FEET)